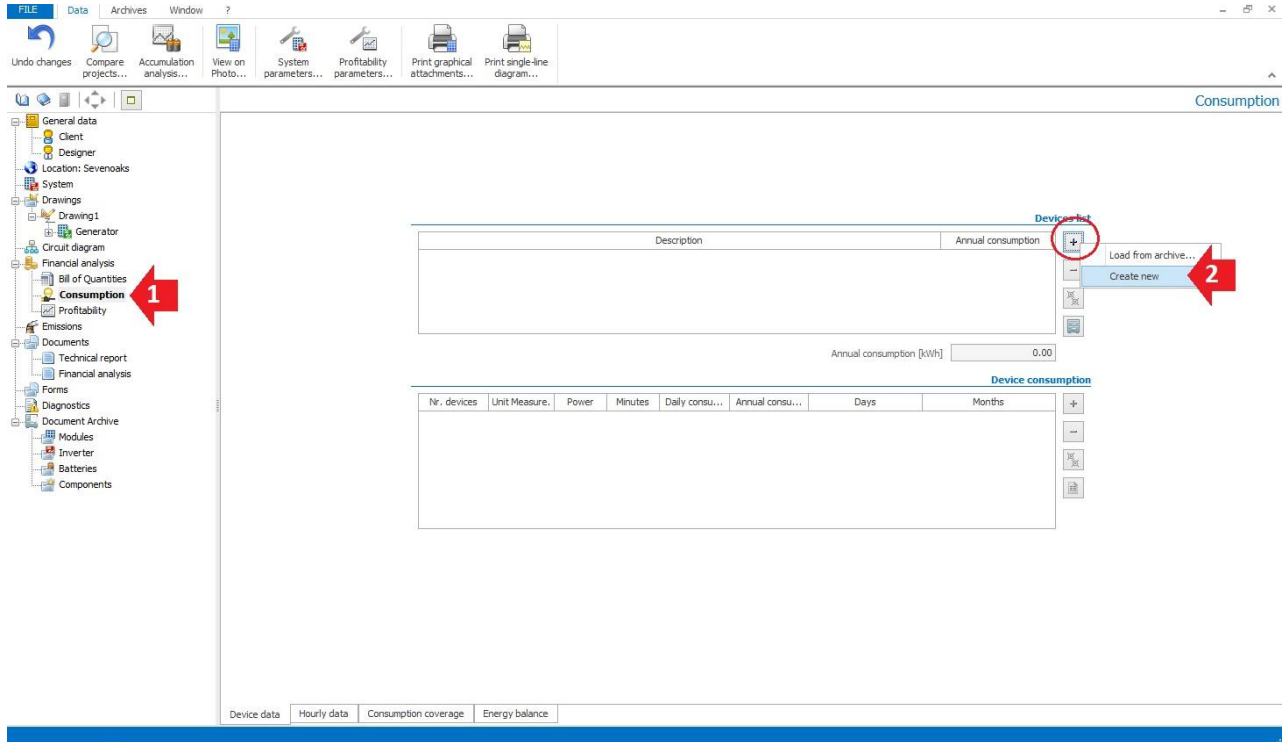


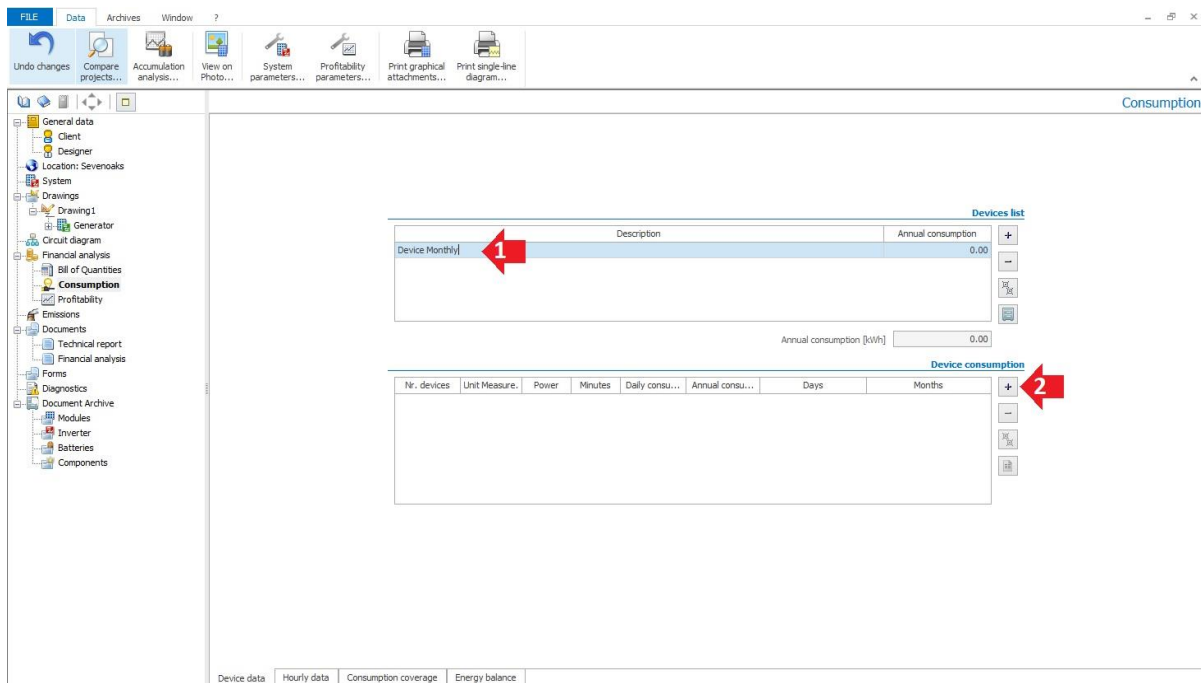
Monthly / annual consumption

A generic average monthly consumption can be defined as follows.

I ° Step (Assign a new device)



II ° Step (assign a name and define the custom parameters)



III ° Step (deactivate unwanted months and define the hourly consumption on the 24 hour basis)

Device consumption

Device consumption

General Data

Device: Device Monthly

Nr. devices: 1 Unit of measurement: kWh

Month (Customized)

Jan Feb Mar Apr May Jun Jul Aug Sept Oct Nov Dec

Day (Customized)

Mon Tue Wed Thu Fri Sat Sun

Load profile [%]

0:00	1:00	2:00	3:00	4:00	5:00	6:00	7:00	8:00	9:00	10:00	11:00	12:00	13:00	14:00	15:00	16:00	17:00	18:00	19:00	20:00	21:00	22:00	23:00
3.60	3.20	3.00	3.00	3.00	3.10	3.30	3.90	4.40	4.90	4.80	4.80	4.60	4.40	4.50	4.60	4.70	4.70	4.90	5.00	4.90	4.60	4.30	3.80

Hourly consumption

0:00	1:00	2:00	3:00	4:00	5:00	6:00	7:00	8:00	9:00	10:00	11:00
0.000	0.000	0.000	0.000	0.000	0.000	0.000	0.000	0.000	0.000	0.000	0.000
12:00	13:00	14:00	15:00	16:00	17:00	18:00	19:00	20:00	21:00	22:00	23:00
0.000	0.000	0.000	0.000	0.000	0.000	0.000	0.000	0.000	0.000	0.000	0.000

Total

Daily consumption [kWh]: 0.00 Annual consumption [kWh]: 0.00

Cancel Confirm

Hourly based detail

Consumption time band

From: 0 To: 23

Energy [kWh]: 0.403

Cancel Confirm

IV ° Step (Obtain an annual summary)

Device consumption

Device consumption

General Data

Device: Device Monthly

Nr. devices: 1 Unit of measurement: kWh

Month (Customized)

Jan Feb Mar Apr May Jun Jul Aug Sept Oct Nov Dec

Day (Customized)

Mon Tue Wed Thu Fri Sat Sun

Load profile [%]

0:00	1:00	2:00	3:00	4:00	5:00	6:00	7:00	8:00	9:00	10:00	11:00	12:00	13:00	14:00	15:00	16:00	17:00	18:00	19:00	20:00	21:00	22:00	23:00
3.60	3.20	3.00	3.00	3.00	3.10	3.30	3.90	4.40	4.90	4.80	4.80	4.60	4.40	4.50	4.60	4.70	4.70	4.90	5.00	4.90	4.60	4.30	3.80

Hourly consumption

0:00	1:00	2:00	3:00	4:00	5:00	6:00	7:00	8:00	9:00	10:00	11:00
0.403	0.403	0.403	0.403	0.403	0.403	0.403	0.403	0.403	0.403	0.403	0.403
12:00	13:00	14:00	15:00	16:00	17:00	18:00	19:00	20:00	21:00	22:00	23:00
0.403	0.403	0.403	0.403	0.403	0.403	0.403	0.403	0.403	0.403	0.403	0.403

Total

Daily consumption [kWh]: 9.67 Annual consumption [kWh]: 290.16

Cancel Confirm

Conclusion:

in the same way you can insert the annual consumption profile, defined on a month by month basis, or as a single "Total Annual Consumption" device: (ex.: Total Annual Consumption/365gg = Daily Consumption -> Daily Consumption/24 hours = Hourly Consumption), (ex.: numerical: 3500 kWh/365 = 9.58 kWhday -> 9.58 kWhday/24 hours = 0.4 kWh)